



# Never stop moving!

Terra 360. The EV charger designed for users on the move, busy urban locations and fleets of commercial vehicles.



- The world's fastest high power charger, delivering up to 360 kW
- Charge up to four vehicles simultaneously
- Innovative design suitable for all parking configurations



—  
**At ABB, we have 130 years of heritage in accessible technology leadership and a world-leading AC and DC charging portfolio – for safe, smart and sustainable mobility.**

**That's why some of the world's biggest brands trust us to provide market-leading e-mobility solutions from home to highway to workplace.**



# Terra 360

Designed around the needs of urban spaces and today's EV driver

Municipalities are banning internal combustion vehicles from the city centers

Delivery and taxi companies are electrifying their fleets

Gas & oil companies are embracing electric car charging, electricity is a new type of fuel

Distributed fast charging in residential areas is an alternative to traditional refueling stations



500 different EV models available globally by 2022 with the sale of EVs estimated to reach close to 10 million by 2025

Cities are investing into high power charging infrastructures for private and public transports

Retail chains are investing in fast charging offering customers a full charge in exchange of an extended visit to the store

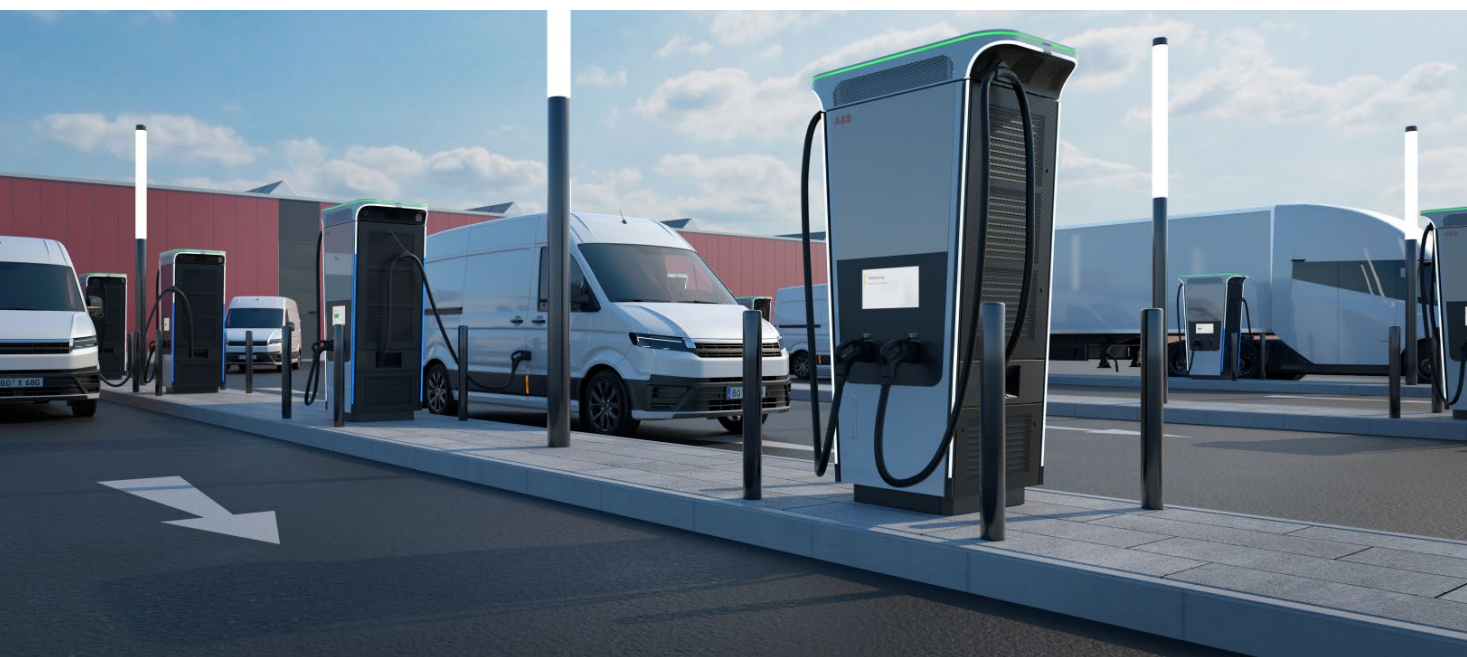
# Terra 360

## The high-power charger for everyone

The Terra 360 is the fastest all-in-one charger on the market. Designed around the needs of today's EV driver, the Terra 360 is powerful, flexible, user-friendly and designed for accessibility.

### Key features

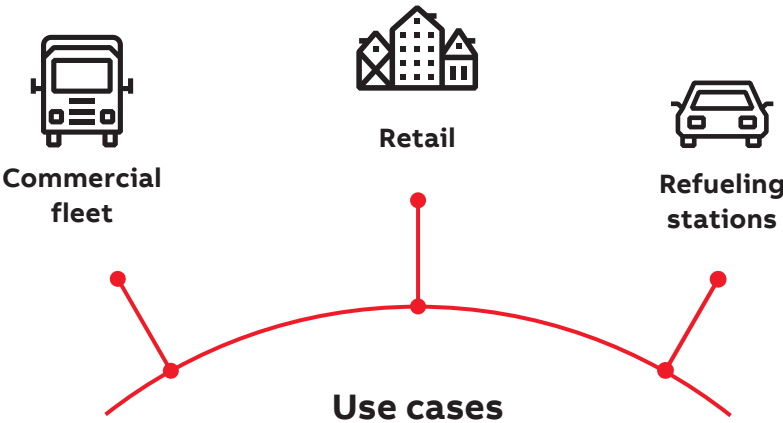
- "All-in-one" integrated design
- Up to 360 kW of charging power
- Modular and scalable in 30 kW steps
- Serving multiple EVs at the same time
- Dynamic power allocation across the outlets
- Supporting the major charging standards
- CCS charging up to 500A (liquid cooled option available in 2022)
- The only charger that can serve a high performance car, such as the Porsce Taycan, at full power (270 kW) and charger a second vehicle (90 kW)
- Serving up to four vehicles at the same time (available from 2022)
- Charging batteries up to 920 Vdc
- Integrated cable management system
- Five meters of cable reach on all sides of the charger
- 15" touchscreen user interface
- Optional 27" advertisement screens
- Optional credit card payment terminals
- Native support to OCPP 1.6 JSON
- Easy and fast installation and commissioning
- Online and local service and configuration tools
- Native integration to ABB site and fleet power management solutions





**A smart and sustainable investment**

ABB's Terra 360 is the world's most powerful and compact all-in-one high power charging solution, helping charging network operators deploy fast-charging stations and accelerate the transition to future mobility.



Commercial fleet	Delivery fleet depots, Taxi, EV fleet depots
Retail	Modern urban charging stations, convenience stores, supermarkets, shopping centers, parking structures, car dealerships, racetracks, car dealerships
Refueling stations	Highway refueling stations, high traffic roads



# Terra 360 benefits



## Best in class charging performance

- 100 km of range in less than 3 minutes
- Dynamic power allocation
- Sharing power to serve up 4 vehicles
- Up to 500A on every outlet



## Designed for flexibility

- Various parking configurations possible
- Wide range of customization options
- Power modularity from 90 kW up to 360 kW
- Supporting all charging standards



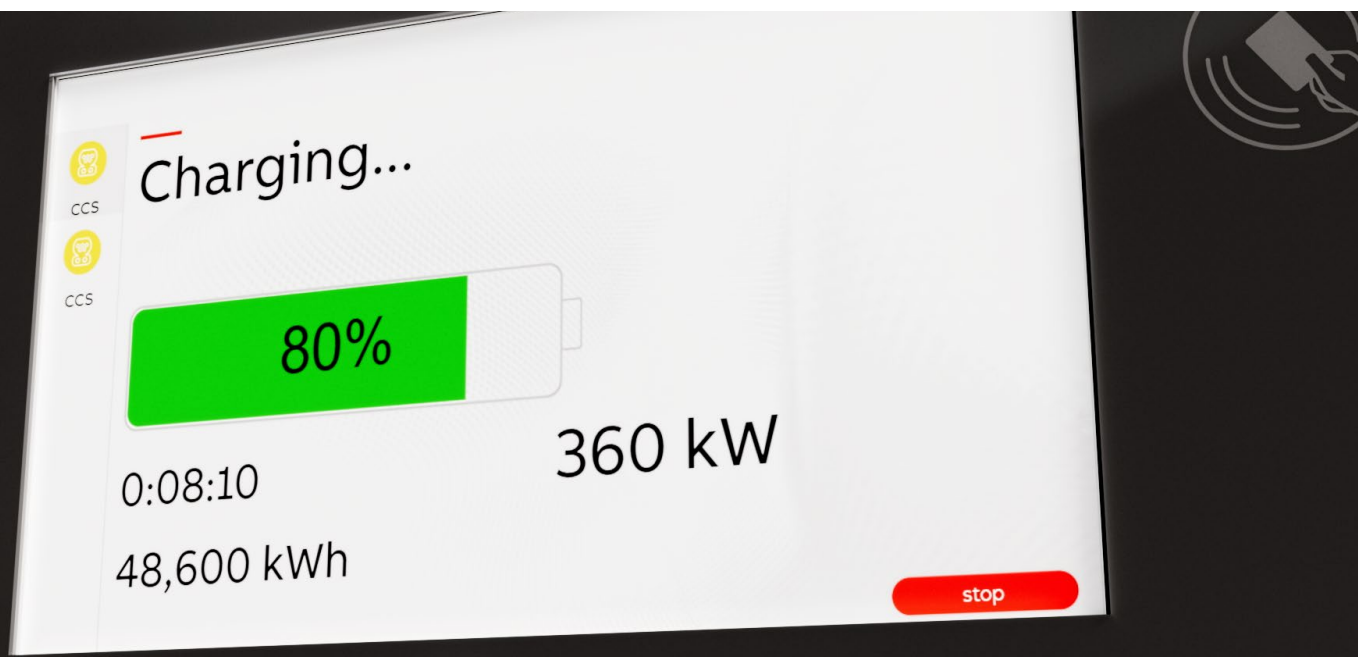
## Accessible to everyone

- Start charging in seconds with Plug&Charge functionality
- Serving all EV models due to long cable reach
- Cables always ready with integrated retraction system
- Designed to be wheelchair user friendly



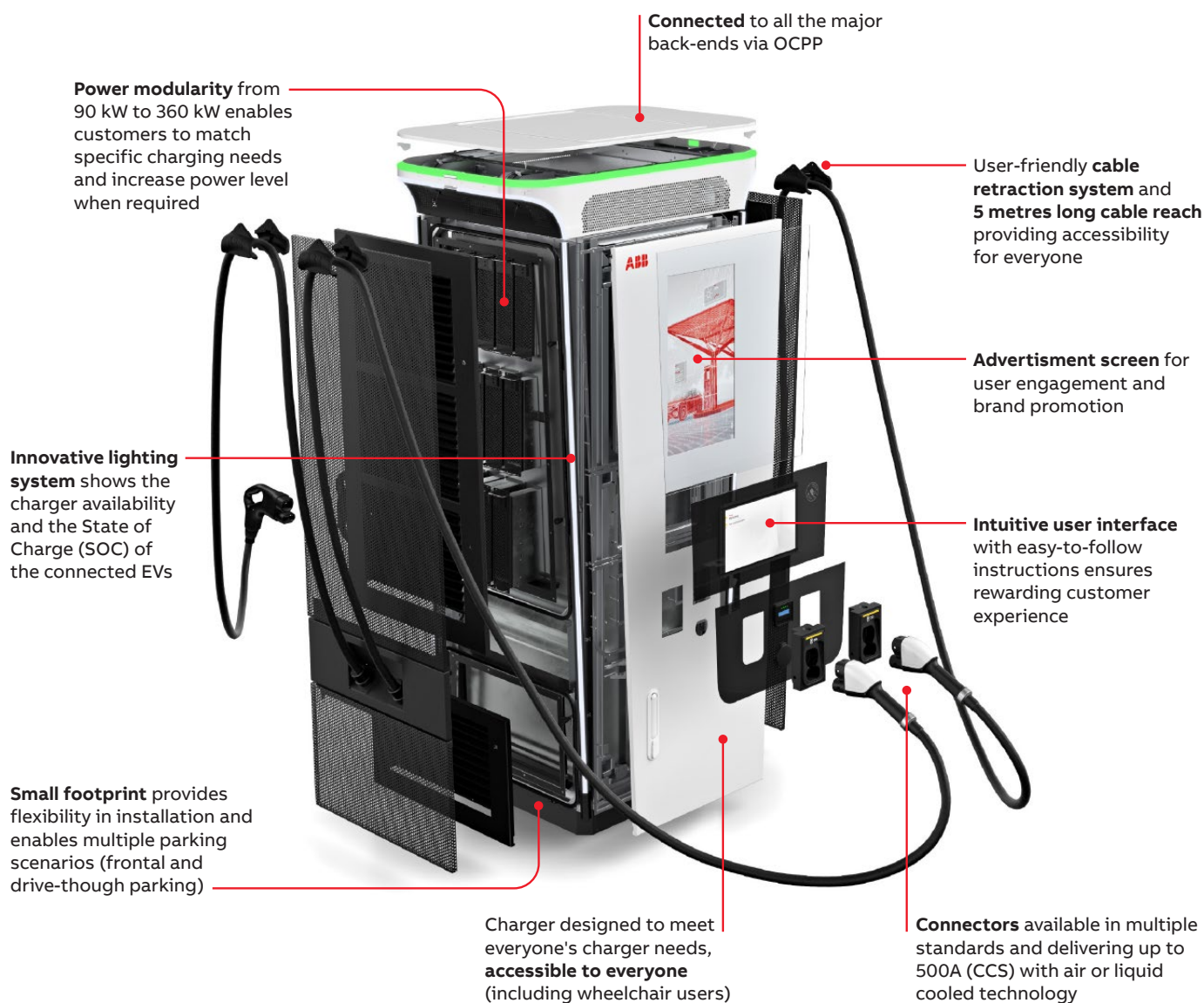
## User centric design

- Simple and intuitive user interface
- User guided by the innovative LED lighting system
- Entertainment and information with the optional advertisement screen
- Easy branding and colour customization



# The Terra 360 all-in-one high-power charger

At a glance



## CHARGING POWER

CCS charging up to 360 kW  
CHAdEMO charging up to 150 kW  
AC Type-2 up to 22 kW

## POWER CONFIGURATIONS

360 / 240 / 180 / 120 kW  
(Upgradable with extra modules)

## DIMENSIONS

Height 2200 mm  
Width 720 mm  
Depth 710 mm

# Technical specification

<b>Charge post</b>	
Charging type	Fast / high power charging
Localization	CE UL (2022)
<b>Outlet options</b>	
Outlet 1	1. CCS 500A 2. CCS 500A liquid cooled (2022)
Outlet 2	1. CCS 500A 2. CCS 500A liquid cooled (2022)
Outlet 3 (Optional available from 2022)	1. CCS 500A 2. CHAdeMO 200A
Outlet 4 (Optional available from 2022)	1. CCS 500A 2. CHAdeMO 200A 3. AC Type-2 22 kW
Input AC power rating	560 A, 385 kVA @ 50 Hz
Input voltage range	400 VAC +/- 10% (50 Hz or 60 Hz)
Max DC output power rating	360 kW
Max AC output power rating (optional)	22 kW
DC output voltage	150-920 Vdc
Number of EV served	Base model up to two, optionally up to four (2022)
Cable length	5.5 meters
CCS cables maximum current	500 A (air cooled, liquid cooled option available from 2022)
CHAdeMO cables maximum current	200A or 125A (available from 2022)
Network type	TN-S, TN-C, TN-C-S, TT (with upstream RCD)
Connector types	3P + N + PE
Protection	Overcurrent, overvoltage, undervoltage, ground fault including DC leakage protection, integrated surge protection
Overvoltage category	Type II
Power factor (full load)	> 0.96
THDi	< 4.5%
Efficiency	> 95% (peak)
Standby power	80 W
Short circuit current	>60 kA
Pre-charge current	< 1 A
Inrush current	< 100 A
Leakage current	30 mA
Energy metering	MID and Eichrecht compliant meters available as option from 2022
Cellular communication	GSM / 4G / LTE
Modem	Embedded cellular modem. Second modem available as option



<b>User interface</b>	
Connectivity	Internet access via 4G / 3G / Ethernet (RJ45)
User authentication	App, ISO 15118 Plug'n'Charge, RFID, PIN code
User interface	15" LCD high-contrast touchscreen
Number of user interfaces	Front (standard). Rear (optional)
Communication protocols	OCPP 1.5, OCPP 1.6 JSON
RFID Reader	ISO 14443 A + B to part 4 and ISO/IEC 15693, Mifare, NFC, Calypso, Ultralight, PayPass, HID; and more
Emergency button	Yes, option available
<b>Configuration</b>	
Software update	Over-the-air updates via ABB web portal
Control and configuration	ABB web portal, on-board Service Portal, OCPP 1.6
Multilanguage system	English, Italian, Spanish, Germany and more than 50 languages available and new languages configurable via ABB Web Tool
<b>General characteristics</b>	
IP and IK rating	IP-54 and IK-10 (cabinet) / IK-8 (touchscreen)
Enclosure type	Stainless steel 430 and Aluminium
Operational altitude	Up to 2000 m
Operating temperature range	-35 C to + 55 C (power de-rating applies)
Storage temperature range	-40 °C to +70 °C
Humidity	20-95 % Rh non-condensing
Mounting	Free-standing cabinet
Dimensions (H x W x D)	2200 x 720 x 710 mm
Weight	700 kg
<b>Certification and standards</b>	
Charging system	IEC 61851-1 ed 3, IEC 61851-21-2 ed 1, IEC 61851-23 ed 1, IEC 61851-24 ed 1, IEC 62196-2, IEC 62196-3, IEC 61000
Communication to the EV	DIN 70121, CHAdeMO 1.2
Warranty	Base warranty 24 months after Site Acceptance Test or 30 months after factory delivery. Warranty extensions available

Distributed by



## HEAD OFFICE

115B Shields Court  
Markham, Ontario  
L3R 9T5

**Toll Free Phone:**  
1-888-667-6632

## MISSISSAUGA

6150 Kennedy Road, Unit 1  
Mississauga, Ontario  
L5T 2J4

**Toll Free Phone:**  
1-888-670-5654

## CAMBRIDGE

375 Sheldon Drive, Unit 3-4  
Cambridge, ON  
N1T 1B1

**Phone:**  
519-231-0100

## Our services



Power Cable  
Assembly



Mod Shop  
& Custom  
Assemblies



VFD  
Services



Lighting  
Services



Construction  
Project  
Management



Modified  
Enclosures



Portable Power  
Distribution

